



University
of Glasgow

Bailey, Lucy Ann (2024) *Walter Fawkes, 1769 – 1825 Patron of the Arts. In two volumes*. PhD thesis.

Volume 2: Illustrations

<https://theses.gla.ac.uk/84373/>

Copyright and moral rights for this work are retained by the author

A copy can be downloaded for personal non-commercial research or study, without prior permission or charge

This work cannot be reproduced or quoted extensively from without first obtaining permission from the author

The content must not be changed in any way or sold commercially in any format or medium without the formal permission of the author

When referring to this work, full bibliographic details including the author, title, awarding institution and date of the thesis must be given

Enlighten: Theses

<https://theses.gla.ac.uk/>
research-enlighten@glasgow.ac.uk

Walter Fawkes, 1769 – 1825
Patron of the Arts

in two Volumes:

Volume two: Illustrations

Lucy Anne Bailey

**Submitted in fulfilment of the requirements for the
Degree of Doctor of Philosophy**

School of Art History
College of Arts
University of Glasgow

May, 2024

CONTENTS

| | Page |
|------------------------------------------------------------------------------------------------------|-------------|
| INTRODUCTION | |
| 1.1 Tomb of Walter Fawkes, Otley Parish Church | 1 |
| 1.2 Tomb of Walter Fawkes to show inscription, Otley Parish Church | 1 |
| 1.3 John Raphael Smith, <i>Walter Fawkes in his Study</i> , c.1800 | 2 |
| 1.4 Farnley Hall, Otley, from the North-East | 2 |
| 1.5 Farnley Hall, Otley, from the South | 3 |
| 1.6 The Hawksworth, Fawkes and Vavasour Family Trees | 4 |
| 1.7 Halls in Wharfedale | 5 |
| CHAPTER 1: ARCHITECTURE, ANCESTORS, AND ANTIQUITIES - FARNLEY HALL, ITS LANDSCAPE AND ESTATES | |
| 1.8 Denton Hall, Wharfedale | 6 |
| 1.9 Harewood House, Wharfedale | 6 |
| 1.10 Tabley House, Cheshire | 7 |
| 1.11 Basildon Park, Berkshire | 7 |
| 1.12 View from the Saloon bay doors, Farnley Hall | 8 |
| 1.13 View from the Octagon Room canted window, Basildon Park | 8 |
| 1.14 Ground Floor Room Plan, Georgian wing, Farnley Hall | 9 |
| 1.15 Staircase, Georgian wing, Farnley Hall | 9 |
| 1.16 J. M. W. Turner, <i>Drawing Room, Farnley</i> , c.1818 | 10 |
| 1.17 East (Memorial) Window, Farnley Church | 10 |
| 1.18 Ceiling detail, Drawing Room, Georgian wing, Farnley Hall | 11 |
| 1.19 Ground Floor Room plan, Elizabethan wing, Farnley Hall | 11 |
| 1.20 Stone Fireplace, Farnley Hall | 12 |
| 1.21 The Old Dairy, Farnley Hall | 12 |
| 1.22 Stone Table, Farnley Hall | 13 |
| 1.23 Flower Garden Porch at Farnley, illustration from <i>Loidis and Elmete</i> , 1816 | 13 |

| | | |
|------|----------------------------------------------------------------------------------------------------------|----|
| 1.24 | Gateway to the Flower Garden at Farnley, illustration from <i>Loidis and Elmete</i> , 1816 | 14 |
| 1.25 | Bay Window in the Flower Garden at Farnley, illustration from <i>Loidis and Elmete</i> , 1816 | 14 |
| 1.26 | Map of the Farnley landscape | 15 |
| 1.27 | Sketch Map of Farnley Park | 16 |
| 1.28 | Samuel Buck, <i>Farnley, the Seat of Francis Fawkes Esq.</i> , c.1720 | 17 |
| 1.29 | Samuel Buck, <i>Hawksworth, the Seat of S^r Walter Hawksworth Bart</i> , c.1720 | 17 |
| 1.30 | Samuel Buck, <i>The South Prospect of Weston Hall the Seat of Will^m Vavasour</i> , c.1720 | 18 |
| 1.31 | The Gardens, Farnley Hall: detail from Ordnance Map dated 1851 | 18 |
| 1.32 | J. M. W. Turner, <i>Conservatory with Memorial Window</i> , c.1818 | 19 |
| 1.33 | J. M. W. Turner, <i>The Wharfe from Farnley Hall</i> , c.1818 | 19 |
| 1.34 | Farnley Park: detail from Ordnance Map, 1851 | 20 |
| 1.35 | Farnley Park: detail from Ordnance Survey Map No. 297, 2013 | 20 |
| 1.36 | J. M. W. Turner, <i>East Gate and Lodges, Farnley</i> , c.1818 | 21 |
| 1.37 | J. M. W. Turner, <i>The West Gates, Farnley</i> , c.1818 | 21 |
| 1.38 | J. M. W. Turner, <i>The Carriage Drive, Farnley</i> , c.1818 | 22 |
| 1.39 | J. M. W. Turner, <i>View of Farnley Hall</i> , c.1818 | 22 |
| 1.40 | J. M. W. Turner, <i>Farnley Hall from the junction of the Wharfe and Washburn</i> , c.1818 | 23 |
| 1.41 | J. M. W. Turner, <i>Lake Tiny, Farnley Park</i> , c. 1818 | 23 |
| 1.42 | J. M. W. Turner, <i>The Avenue, Farnley</i> , c.1818 | 24 |
| 1.43 | J. M. W. Turner, <i>The Woodwalk, Farnley Hall</i> , c.1818 | 24 |
| 1.44 | J. M. W. Turner, <i>Lake Plantation, Farnley</i> , c.1818 | 25 |
| 1.45 | J. M. W. Turner, <i>The Pheasant's Nest, Farnley Park</i> , c.1818 | 25 |
| 1.46 | J. M. W. Turner, <i>Shooting Party on Hawksworth Moor</i> , c.1816 | 26 |
| 1.47 | J. M. W. Turner, <i>Grouse Shooting on Beamsley Beacon</i> , c.1816 | 26 |
| 1.48 | F. H. Fawkes, <i>Mr Grimston</i> , c.1810-30 | 27 |
| 1.49 | F. H. Fawkes, <i>Mr (?)</i> , c.1810-30 | 27 |
| 1.50 | F. H. Fawkes, <i>Lord (?)</i> , c.1810-30 | 28 |
| 1.51 | J. M. W. Turner, <i>Head of a Grouse</i> , c.1815-25 | 28 |
| 1.52 | J. M. W. Turner, <i>Head of a Partridge</i> , c.1815-25 | 29 |
| 1.53 | J. M. W. Turner, <i>Head of a Woodcock</i> , c.1815-25 | 29 |

| | | |
|------|-------------------------------------------------------------------------------------------------------|----|
| 1.54 | J. M. W. Turner, <i>Head of a Cock Pheasant</i> , c.1815-25 | 30 |
| 1.55 | J. M. W. Turner, <i>The Deer Park, Caley Hall</i> , c.1818 | 30 |
| 1.56 | J. M. W. Turner, <i>Valley of the Wharfe, from Caley Park</i> , c.1815 | 31 |
| 1.57 | J. M. W. Turner, <i>Wharfedale from the Chevin</i> , c.1818 | 31 |
| 1.58 | J. M. W. Turner, <i>Farnley Hall from above Otley</i> , c.1815 | 32 |
| 1.59 | J. M. W. Turner, <i>Caley Hall</i> , c.1818 | 32 |
| 1.60 | John R. Wildman, <i>J. M. W. Turner and Walter Fawkes at Farnley Hall after Coursing</i> , c. 1820-24 | 33 |

CHAPTER 2: MUSEUMS, MUNIMENTS, AND MARSTON MOOR - FAIRFAXIANA AND FAWKES' CIVIL WAR RELICS

| | | |
|------|-------------------------------------------------------------------------------------------|----|
| 2.1 | Abraham Cooper, <i>Untitled</i> , c.1819 | 34 |
| 2.2 | William Marshall, <i>Thomas Fairfax, 3rd Lord Fairfax of Cameron</i> , 1647 | 34 |
| 2.3 | J. M. W. Turner, <i>Oak Panelled Hall, with General Fairfax's Chair, Farnley</i> , c.1818 | 35 |
| 2.4 | J. M. W. Turner, <i>A Frontispiece (at Farnley Hall)</i> , 1815 | 35 |
| 2.5 | Fairfax Hall, Menston | 36 |
| 2.6 | J. M. W. Turner, <i>A Frontispiece (at Farnley Hall)</i> , detail, 1815 | 36 |
| 2.7 | J. M. W. Turner, <i>Fairfaxiana, 1</i> , 'Fairfax's Armour', c.1815-25 | 37 |
| 2.8 | J. M. W. Turner, <i>Fairfaxiana, 2</i> , 'Fairfax's Drum', c.1815-25 | 37 |
| 2.9 | J. M. W. Turner, <i>Fairfaxiana, 3</i> , 'Fairfax's Chair', c.1815-25 | 38 |
| 2.10 | J. M. W. Turner, <i>Fairfaxiana, 4</i> , 'The Three Swords', c.1815-25 | 38 |
| 2.11 | J. M. W. Turner, <i>Fairfaxiana, 5</i> , 'The Cabinet - Closed', c.1815-25 | 39 |
| 2.12 | J. M. W. Turner, <i>Fairfaxiana, 1</i> , 'The Cabinet - Open', c.1815-25 | 39 |
| 2.13 | J. M. W. Turner, <i>A Sideboard Containing Farnley Relics</i> , 1821 | 40 |
| 2.14 | J. M. W. Turner, <i>Historical Vignettes, 1</i> , 'Coronation Thrones', c.1815-1825 | 40 |
| 2.15 | J. M. W. Turner, <i>Historical Vignettes, 2</i> , 'Battle of Agincourt', c.1815-1825 | 41 |
| 2.16 | J. M. W. Turner, <i>Historical Vignettes, 3</i> , 'Reformation', c.1815-1825 | 41 |
| 2.17 | J. M. W. Turner, <i>Historical Vignettes, 4</i> , 'Carolus', c.1815-1825 | 42 |
| 2.18 | J. M. W. Turner, <i>Historical Vignettes, 5</i> , 'First Period', c.1815-1825 | 42 |
| 2.19 | J. M. W. Turner, <i>Historical Vignettes, 6</i> , 'Second Period', c.1815-1825 | 43 |
| 2.20 | J. M. W. Turner, <i>Historical Vignettes, 7</i> , 'Third Period', c.1815-1825 | 43 |

| | | |
|------|---------------------------------------------------------------------------------------|----|
| 2.21 | J. M. W. Turner, <i>Historical Vignettes</i> , 8, 'Fourth Period', c.1815-1825 | 44 |
| 2.22 | J. M. W. Turner, <i>Historical Vignettes</i> , 9, 'Oliver Cromwell', c.1815-1825 | 44 |
| 2.23 | J. M. W. Turner, <i>Historical Vignettes</i> , 10, 'Richard Cromwell', c.1815-1825 | 45 |
| 2.24 | J. M. W. Turner, <i>Historical Vignettes</i> , 11, 'Revolution 1688', c.1815-1825 | 45 |
| 2.25 | J. M. W. Turner, <i>Historical Vignettes</i> , 12, 'The Banners', c.1815-1825 | 46 |

CHAPTER 3: PAINTINGS, PATRIOTISM, AND PROMOTION - FAWKES' ART COLLECTION

| | | |
|------|----------------------------------------------------------------------------------------------------------------------------------------------------------------------|----|
| 3.1 | George Walker (?), Drawing Room Panel Paintings, Farnley Hall | 47 |
| 3.2 | George Walker (?), 'Hunting Scene', Drawing Room, Farnley Hall | 47 |
| 3.3 | George Walker (?), 'Hunting Scene 2', Drawing Room, Farnley Hall | 48 |
| 3.4 | George Walker (?), 'Otter', Drawing Room, Farnley Hall | 48 |
| 3.5 | George Walker (?), 'Gathering', Drawing Room, Farnley Hall | 49 |
| 3.6 | George Walker (?), 'Beast', Drawing Room, Farnley Hall | 49 |
| 3.7 | Unknown artist, <i>Walter Ramsden Beaumont Hawksworth Fawkes</i> (d.1792) | 50 |
| 3.8 | John Hoppner, <i>Walter Ramsden Fawkes</i> , c.1810 | 50 |
| 3.9 | John Raphael Smith, <i>Right Honorable Charles James Fox, M.P.</i> (1749-1806), seated in his study, in a blue coat and mustard waistcoat and britches, c.1800 | 51 |
| 3.10 | Attributed to Thomas Charles Wageman (1787-1863), <i>Portrait of</i> <i>Walter Ramsden Fawkes (1769-1825)</i> | 51 |
| 3.11 | Thomas Woolnorth after Thomas Charles Wageman, <i>Walter Ramsden</i> <i>Fawkes</i> , Published 1825 | 52 |
| 3.12 | William Robinson (?), <i>Walter Ramsden Fawkes</i> , c.1823 | 52 |
| 3.13 | George Romney, <i>Lady Hamilton as 'Nature'</i> , 1782 | 53 |
| 3.14 | J. M. W. Turner, <i>Memorial Window, Farnley</i> , c.1818 | 53 |
| 3.15 | J. M. W. Turner, <i>Morning Room, Farnley</i> , c.1818 | 54 |
| 3.16 | J. M. W. Turner, <i>Grand Staircase, Farnley</i> , c.1818 | 54 |
| 3.17 | J. M. W. Turner, <i>Library, Farnley</i> , c.1818 | 55 |
| 3.18 | J. M. W. Turner, <i>Library, with Heraldic Window, Farnley</i> , c.1818 | 55 |

| | | |
|------|-------------------------------------------------------------------------------------------------|----|
| 3.19 | J. M. W. Turner, <i>Oak Staircase, Farnley</i> , c.1818 | 56 |
| 3.20 | J. M. W. Turner, <i>Dort or Dordrecht: The Dort Packet-boat from Rotterdam becalmed</i> , 1818 | 56 |
| 3.21 | Frontispiece designed by J. M. W. Turner from the Souvenir Catalogue of Fawkes' 1819 Exhibition | 57 |
| 3.22 | Tureen, Nantgarw Porcelain, Farnley Hall | 58 |
| 3.23 | Plates, Nantgarw Porcelain, Farnley Hall | 58 |

CHAPTER 4: BIRDS, BOOKS, AND BINDINGS - THE LIBRARIES AT FARNLEY

| | | |
|------|-------------------------------------------------------------------------------------------------------------------------------------------------|----|
| 4.1 | Bookcases, Georgian Library, Farnley Hall | 59 |
| 4.2 | Bookcase with jib door, Georgian Library, Farnley Hall | 59 |
| 4.3 | J. M. W. Turner, <i>Interior of the Library, Farnley Hall</i> , 1818 | 60 |
| 4.4 | W. Wilkins Pinoil (?), <i>E.YAW.OR</i> , 1816 | 60 |
| 4.5 | R. Dighton, <i>The Specious Orator</i> , 1794 | 61 |
| 4.6 | James Gillray, <i>The Eruption of the Mountain</i> , 1794 | 61 |
| 4.7 | James Gillray, <i>Democratic Leveling</i> , 1796 | 62 |
| 4.8 | James Gilray, <i>The Generae of Patriotism</i> , 1796 | 62 |
| 4.9 | Samuel W. Fores, <i>The Cheltenham Dandy</i> , 1819 | 63 |
| 4.10 | R. Dighton, <i>A View from Trinity College, Oxford</i> , 1807 | 63 |
| 4.11 | R. Dighton, <i>A Celebrated Public Orator</i> , 1808 | 64 |
| 4.12 | George Cruickshank, <i>Radical Parliament!!</i> , 1821 | 64 |
| 4.13 | Unattributed, <i>Le Moine Mennechini Chef des Constitutionels de Naples</i> , undated | 65 |
| 4.14 | I Jackson, engraved by Scriven, <i>John Bellingham</i> , 1812 | 65 |
| 4.15 | Portraits of James Ings, Thomas Brunt, Richard Tidd and William Davidson, undated | 66 |
| 4.16 | Image from <i>Portraits of the Kings of England etc.</i> by Walter Fawkes | 66 |
| 4.17 | 'William Rufus King of England' from <i>Portraits of the Kings of England etc.</i> by Walter Fawkes | 67 |
| 4.18 | 'The Summer Dress and Travelling Habit of the Ladies of the Eighth Century' from <i>Portraits of the Kings of England etc.</i> by Walter Fawkes | 67 |
| 4.19 | 'An Anglo Saxon Nobleman in his State Dress' from <i>Portraits of the Kings of England etc.</i> by Walter Fawkes | 68 |

| | | |
|------|--------------------------------------------------------------------------|----|
| 4.20 | J. M. W. Turner, <i>Leeds</i> , 1816 | 68 |
| 4.21 | George Walker, 'Milk Boy', 1814 | 69 |
| 4.22 | George Walker, 'Stone-breakers on the Road', 1814 | 69 |
| 4.23 | F. H. Fawkes, 'Mr Waterton', c.1830 | 70 |
| 4.24 | F. H. Fawkes, 'Sir Francis Burdett and Mr Hobhouse', c.1830 | 70 |
| 4.25 | F. H. Fawkes, 'Mr William Morrill', c.1830 | 70 |
| 4.26 | F. H. Fawkes, 'Sir Henry Ibbetson', c.1830 | 70 |
| 4.27 | F. H. Fawkes, 'Lord Harewood and Colonel Lascelles', c.1830 | 71 |
| 4.28 | F. H. Fawkes, 'Hon. Henry Lascelles', c.1830 | 71 |
| 4.29 | F. H. Fawkes, <i>Caricature of J. M. W. Turner, R. A. P. P.</i> , c.1818 | 71 |
| 4.30 | S. Howitt, 'Sparrowhawk', c.1815-20 | 72 |
| 4.31 | Edward Swinburne, 'Blackcock', c.1815-20 | 72 |
| 4.32 | Taylor, 'Head of a Red-backed Shrike (F)', c.1815-20 | 73 |
| 4.33 | Lady Armytage, 'Head of a Shoveller', c.1815-20 | 73 |
| 4.34 | Miss I Middleton, 'Head of a Mallard', c.1815-20 | 73 |
| 4.35 | John Ibbetson, 'Dead Treecreeper', c.1815-20 | 74 |
| 4.36 | Sir William Pilkington, 'Dead Swallow (F)', c.1815-20 | 74 |
| 4.37 | J. M. W. Turner, <i>Dead Kingfisher</i> , c.1815-20 | 74 |
| 4.38 | Taylor, 'Dead Water Ouzel', c.1815-20 | 75 |
| 4.39 | J. M. W. Turner, <i>Dead Grouse</i> , c.1815-20 | 75 |
| 4.40 | Jan Weenix, <i>Dead Game and Small Birds</i> , c.1695 | 76 |
| 4.41 | J. M. W. Turner, <i>Head of White Owl</i> , 1815-20 | 76 |
| 4.42 | J. M. W. Turner, <i>Head of a Heron</i> , 1815-20 | 77 |
| 4.43 | J. M. W. Turner, <i>Raby Castle</i> , 1817 | 77 |
| 4.44 | J. M. W. Turner, <i>The Acropolis, Athens</i> , c.1822 | 78 |
| 4.45 | J. M. W. Turner, <i>Lalla Rookh</i> , c.1822 | 78 |
| 4.46 | J. M. W. Turner, <i>Norham Castle</i> , c.1822 | 79 |
| 4.47 | J. M. W. Turner, <i>Rokeby</i> , c.1822 | 79 |
| 4.48 | J. M. W. Turner, <i>Melrose Abbey</i> , c.1822 | 80 |
| 4.49 | J. M. W. Turner, <i>Glen Artney</i> , c.1822 | 80 |
| 4.50 | J. M. W. Turner, <i>Three Kingdoms Frontispiece</i> , c.1822 | 81 |

CHAPTER 5: PAINTER, PATRON, AND PLACE -
TURNER, FAWKES AND FARNLEY

| | | |
|------|-----------------------------------------------------------------------------------------------------------|----|
| 5.1 | J. M. W. Turner, <i>Bolton Abbey, Yorkshire</i> , 1809 | 82 |
| 5.2 | J. M. W. Turner, <i>The Strid, Bolton Woods</i> , 1808 | 83 |
| 5.3 | J. M. W. Turner, <i>The Strid, Bolton Abbey, Yorkshire</i> , c.1809 | 83 |
| 5.4 | J. M. W. Turner, <i>Farnley Hall and Otley from the West Chevin</i> , c.1816-7 | 84 |
| 5.5 | J. M. W. Turner, <i>Farnley Hall and Otley from the West Chevin</i> , c.1816 | 84 |
| 5.6 | J. M. W. Turner, <i>Farnley Hall from Otley Chevin</i> , c.1816-8 | 84 |
| 5.7 | J. M. W. Turner, <i>Farnley Hall, from above Otley</i> , c.1816 | 84 |
| 5.8 | J. M. W. Turner, <i>The Valley of Chamouni</i> , 1809 | 84 |
| 5.9 | J. M. W. Turner, <i>Tabley, Cheshire, the Seat of Sir J. F. Leicester, Bart.: Calm Morning</i> , 1809 | 85 |
| 5.10 | J. M. W. Turner, <i>Tabley, Cheshire, the Seat of Sir J. F. Leicester, Bart.: Windy Day</i> , 1808 | 85 |
| 5.11 | F. H. Fawkes, <i>Sketch of a Card Game at Farnley Hall</i> , c.1830 | 86 |
| 5.12 | Claude Gellée, called Le Lorrain, <i>Landscape with Jacob and Laban and his Daughters</i> , c.1654 | 86 |
| 5.13 | J. M. W. Turner, <i>Petworth, Sussex, the Seat of the Earl of Egremont: Dewy Morning</i> , 1810 | 87 |
| 5.14 | J. M. W. Turner, <i>Cockermouth Castle</i> , 1810 | 87 |
| 5.15 | Carved Room, Petworth House | 88 |
| 5.16 | J. M. W. Turner, <i>The Lake, Petworth: Sunset, Fighting Bucks</i> , c.1829 | 89 |
| 5.17 | J. M. W. Turner, <i>The Lake, Petworth: Sunset, a Stag Drinking</i> , c.1829 | 89 |
| 5.18 | J. M. W. Turner, <i>Chichester Canal</i> , c.1829 | 90 |
| 5.19 | J. M. W. Turner, <i>Brighton from the Sea</i> , c.1829 | 90 |
| 5.20 | J. M. W. Turner, <i>Interior of a Gothic Church</i> , c.1797 | 91 |
| 5.21 | J. M. W. Turner, <i>Yellow Curtains</i> , 1827 | 91 |
| 5.22 | J. M. W. Turner, <i>The South Wall of the Square Dining-Room</i> , 1827 | 92 |
| 5.23 | J. M. W. Turner, <i>Music in the White Library</i> , 1827 | 92 |

CONCLUSION

- | | | |
|-----|--------------------------------------------------------------------------------|----|
| 6.1 | Postcard of Farnley Hall showing the wing added in the late nineteenth century | 93 |
| 6.2 | Press cutting from 1940, Farnley Hall as a Maternity Hospital | 93 |

Please note, all sizes given in the captions to the illustrations are in millimetres unless stated otherwise.

Figure 1.1



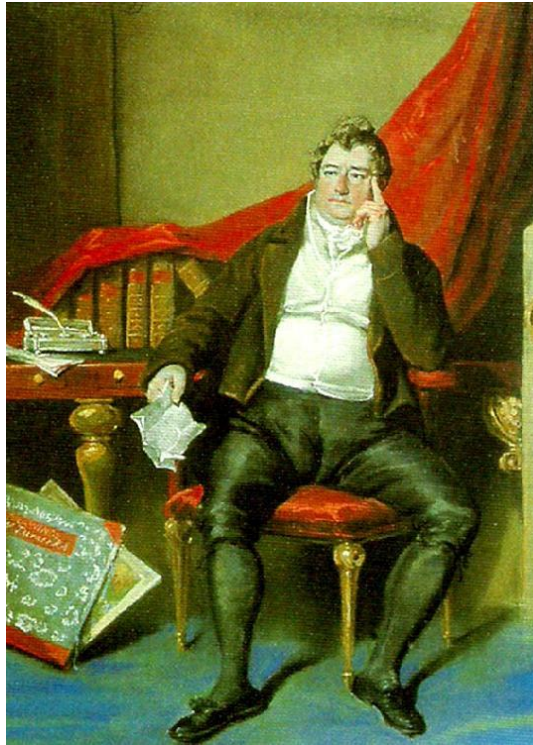
Tomb of Walter Fawkes, Otley Parish Church,
October 2018, (Author's photograph)

Figure 1.2



Tomb of Walter Fawkes to show inscription, Otley Parish Church,
October 2018, (Author's photograph)

Figure 1.3



John Raphael Smith, *Walter Fawkes in his Study*, c.1800,
pastel, size unknown, Private Collection

Figure 1.4



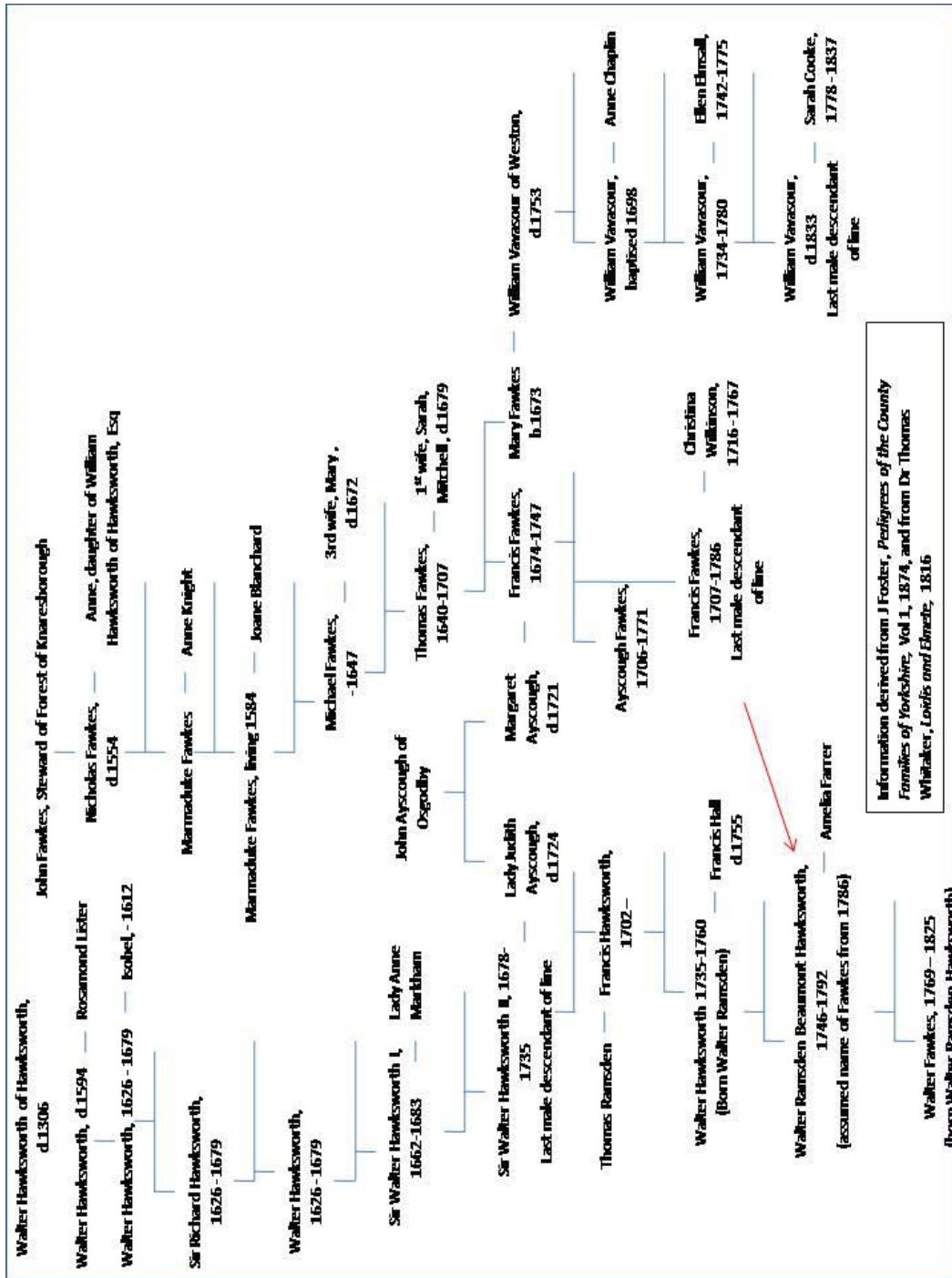
Farnley Hall, Otley, from the North-East, June 2016, (Author's photograph)

Figure 1.5



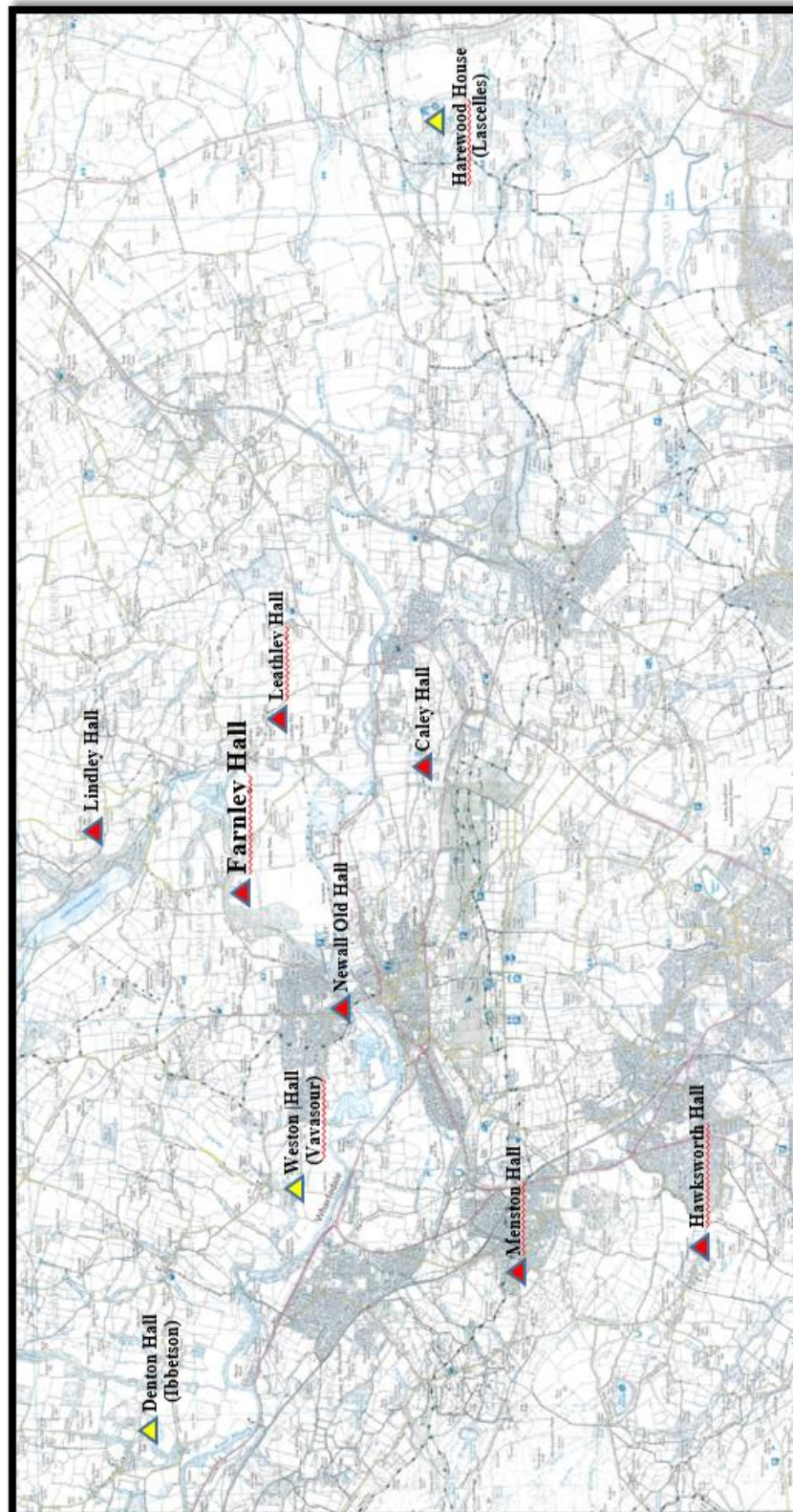
Farnley Hall, Otley, from the South, June 2016, (Author's photograph)

Figure 1.6



The Hawksworth, Fawkes and Vavasour Family Trees

Figure 1.7



Halls in Wharfedale

(Red triangles show halls in the Farnley Estate and those in yellow the halls of other Country Seats (family name given). This map is for reference purposes only and may not be to scale.)

Figure 1.8



Denton Hall, Wharfedale, August 2021 (Author's photograph)

Figure 1.9



Harewood House, Wharfedale, August 2019 (Author's photograph)

Figure 1.10



Tabley House, Cheshire (<http://www.tableyhouse.co.uk/> accessed 3 July 2023)

Figure 1.11



Basildon Park, Berkshire (<https://www.nationaltrust.org.uk/visit/oxfordshire-buckinghamshire-berkshire/basildon-park>, accessed 3 July 2023)

Figure 1.12



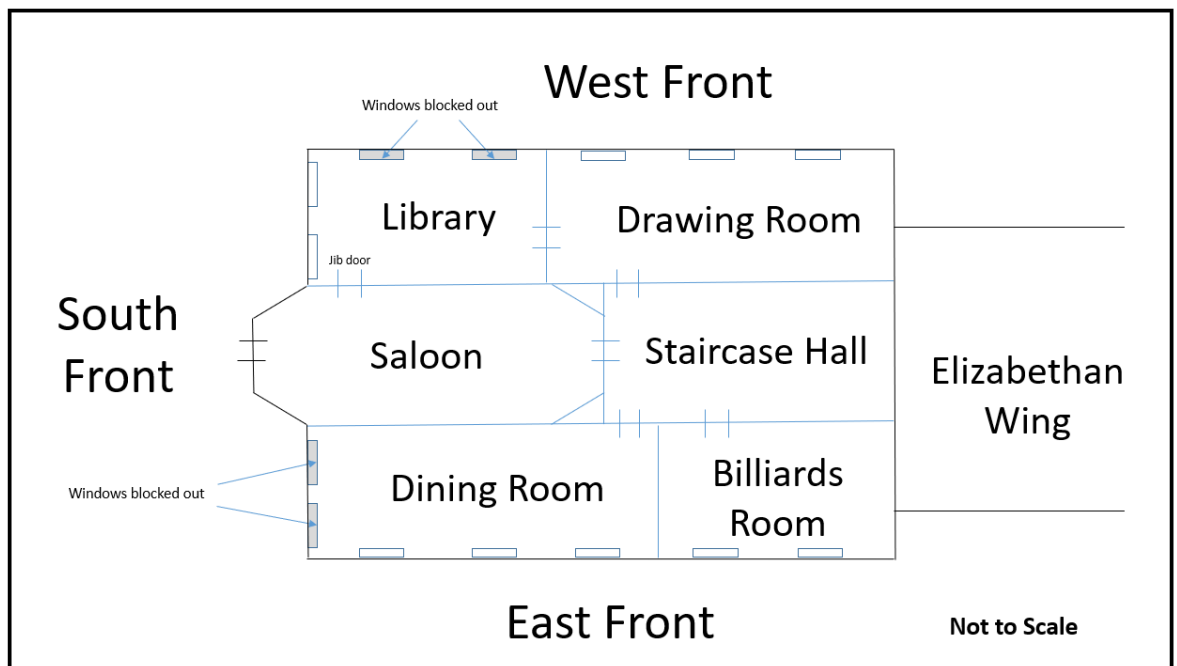
View from the Saloon bay doors, Farnley Hall, 2018 (Author's photograph)

Figure 1.13



View from the Octagon Room canted window, Basildon Park, Berkshire (Christopher Warleigh-Lack, unpublished PhD Thesis)

Figure 1.14



Ground Floor Plan, Georgian wing, Farnley Hall

Figure 1.15



Staircase, Georgian wing, Farnley Hall, June 2023 (Author's photograph)

Figure 1.16



J. M. W. Turner, *Drawing Room, Farnley*, c.1818, body-colour on grey paper, 315 x 412,
Private Collection

Figure 1.17



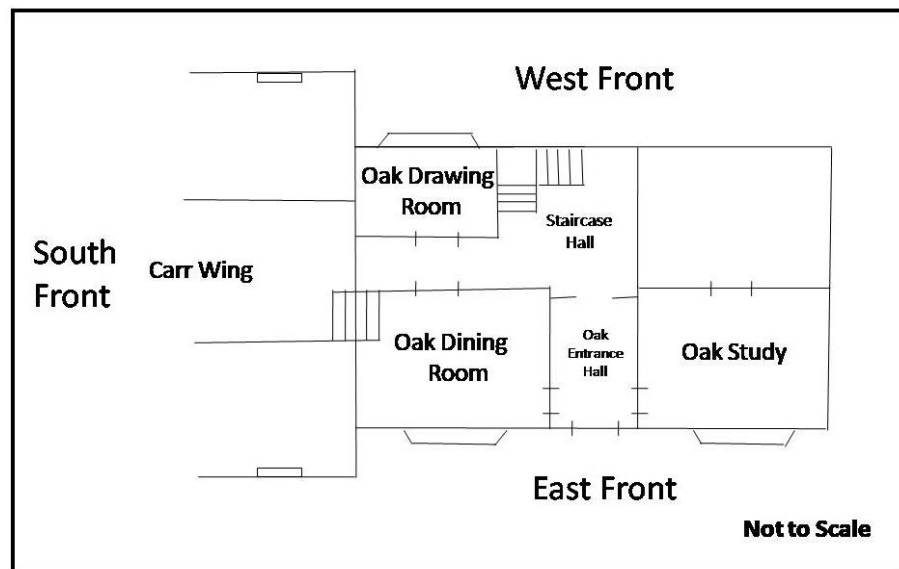
East (Memorial) Window, Farnley Church, August 2019 (Author's photograph)

Figure 1.18



Ceiling Detail, Drawing Room, Georgian wing, Farnley Hall, June 2023 (Author's photograph)

Figure 1.19



Ground floor room plan, Elizabethan Wing, Farnley Hall

Figure 1.20



Stone Fireplace with carved 'C F' in the Old Hall, Farnley Hall,
28 August 2019, (Author's photograph)

Figure 1.21



The Old Dairy, Farnley Hall, August 2019 (Author's photograph)

Figure 1.22



Stone Table, Farnley Hall, August 2019 (Author's photograph)

Figure 1.23



‘Flower Garden Porch at Farnley Removed from Newhall’, illustration taken from Dr. Thomas Dunham Whitaker’s, *Loidis and Elmete*, 1816

Figure 1.24



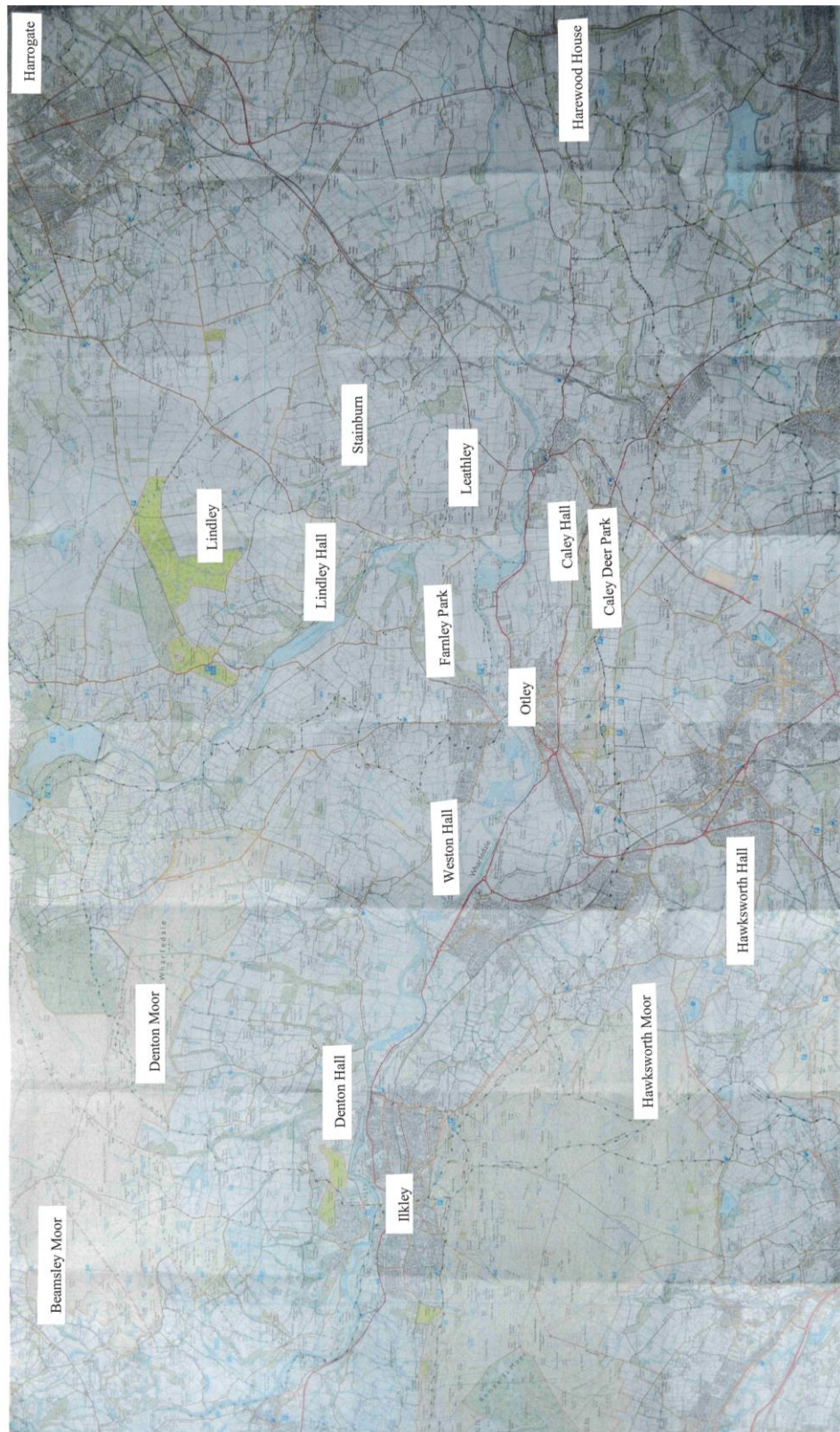
‘Gateway to the Flower Garden at Farnley Removed from Menston Hall, formerly the seat of Col. Charles Fairfax, A.D. 1814’, illustration taken from Dr. Thomas Dunham Whitaker’s, *Loidis and Elmete*, 1816

Figure 1.25



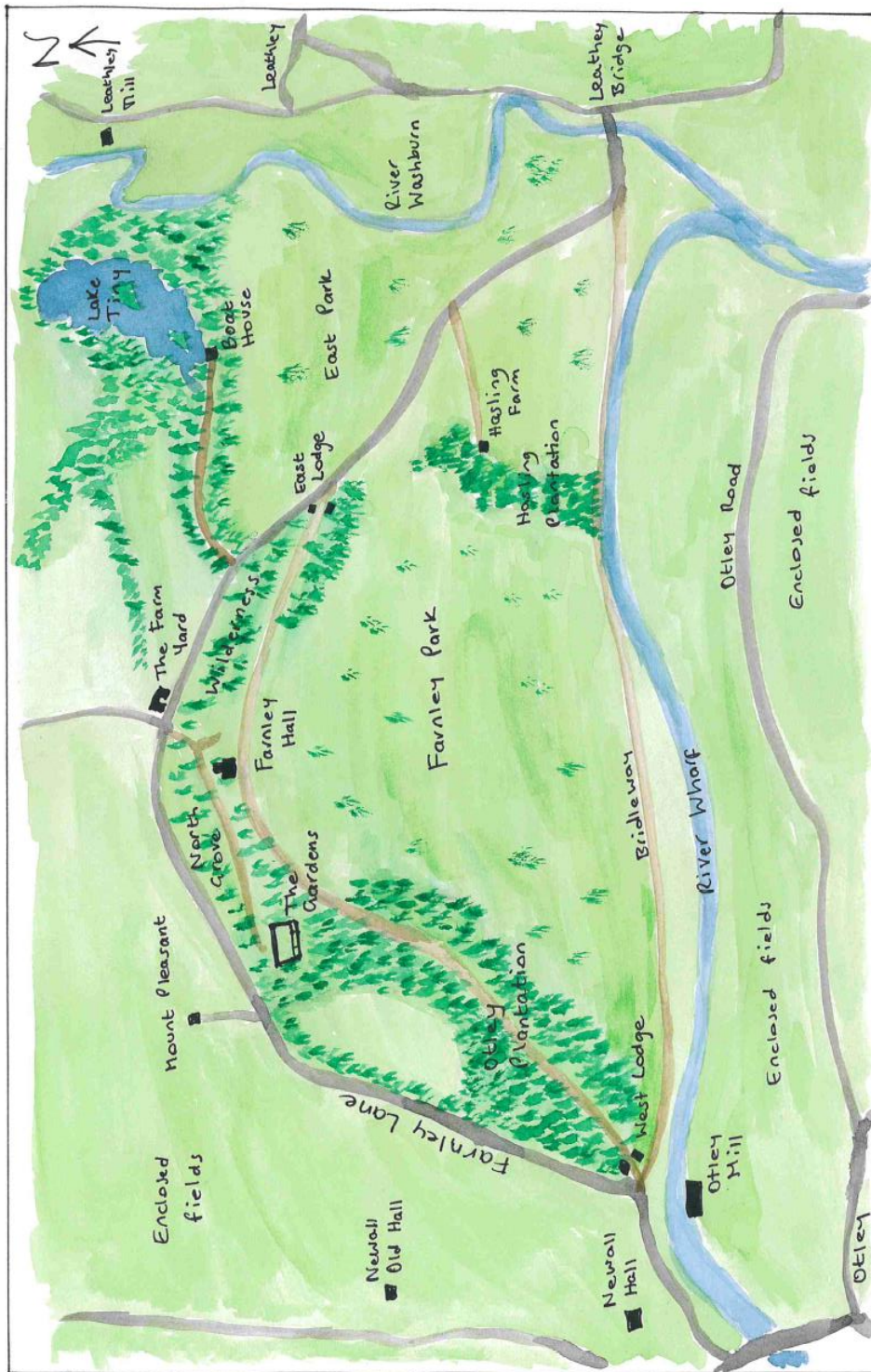
‘Bay Window in the Flower Garden at Farnley Removed from Lindley Hall, an ancient seat of the Palmer Family by W. Packer Esq. A.D. 1814.’, illustration taken from Dr. Thomas Dunham Whitaker’s, *Loidis and Elmete*, 1816

Figure 1.26



Map of the Farnley Landscape, to show locations on the Farnley Estate and Wharfedale Valley

Figure 1.27



Sketch Map of Farnley Park, scale approx.. 9 cm to 1 mile, based on Ordnance Survey Map published 1851

Figure 1.28



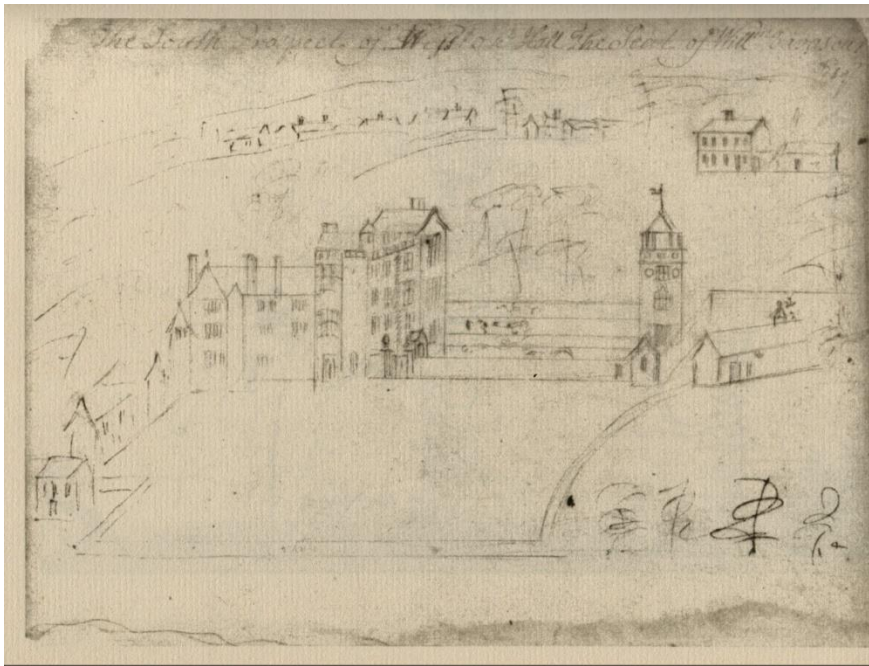
Samuel Buck *Farnley, The Seat of Frank Fawkes Esq.*, c.1720, taken from Ian Hall's, *Samuel Buck's Yorkshire Sketchbook* (Wakefield, England: Wakefield Historical Publications, 1979), p. 200-1.

Figure 1.29



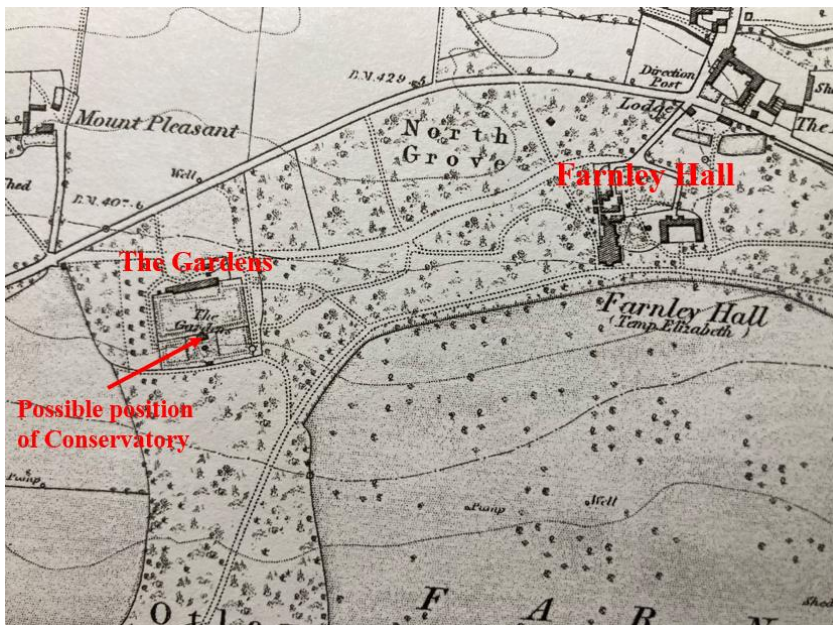
Samuel Buck, *Hawskworth, the Seat of S^r Walter Hawskworth Bart*, c.1720, taken from Ian Hall's, *Samuel Buck's Yorkshire Sketchbook* (Wakefield, England: Wakefield Historical Publications, 1979), p. 204-5.

Figure 1.30



Samuel Buck, *The South Prospect of Weston Hall the Seat of Will^m Vavasour*, c.1720, taken from Ian Hall's, *Samuel Buck's Yorkshire Sketchbook* (Wakefield, England: Wakefield Historical Publications, 1979), p. 195.

Figure 1.31



The Gardens, Farnley Hall: detail from Ordnance Map 187,202, Surveyed in 1847 by Captain Tucker, R. E. Contoured in 1851 by Captain Hawkins, R. E. Engraved in 1851, under the direction of Captain Yolland, R. E. at the Ordnance Map Office Southampton and Published by L^t Colonel Hall, R. E. Superintendent. 5th November 1851.

Figure 1.32



J. M. W. Turner, *Conservatory, with Memorial Window*, c.1818, pen and black ink and bodycolour over black chalk on grey paper, 332 x 416mm, Private Collection

Figure 1.33



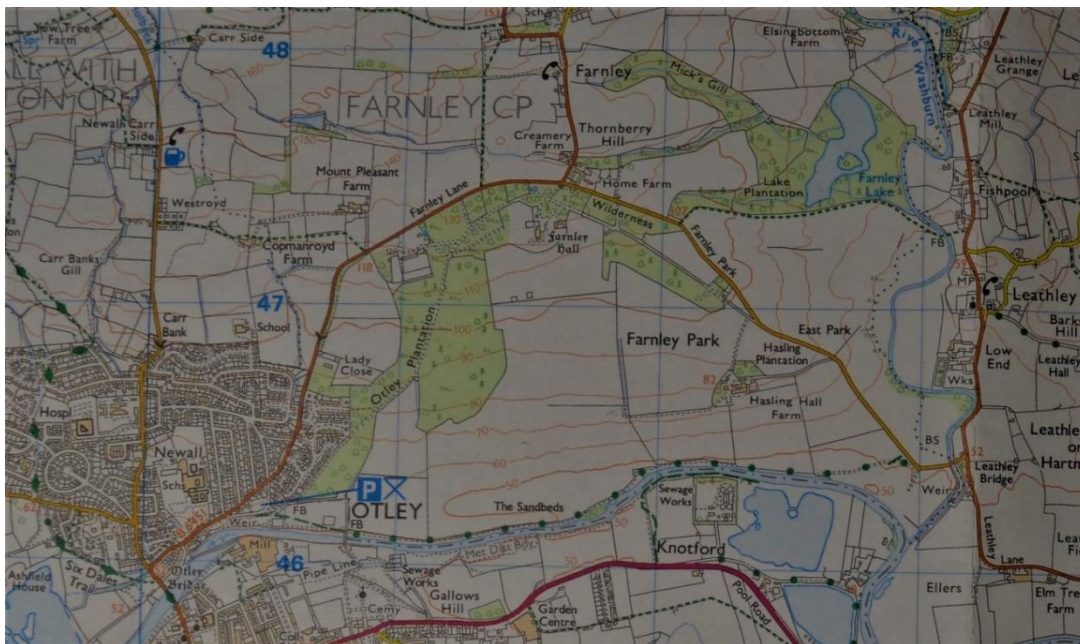
J. M. W. Turner, *The Wharfe from Farnley Hall*, c.1818, body-colour on grey paper, 296 x 416mm, Private Collection

Figure 1.34



Farnley Park: detail from Ordnance Map 187,202, Surveyed in 1847 by Captain Tucker, R. E. Contoured in 1851 by Captain Hawkins, R. E. Engraved in 1851, under the direction of Captain Yolland, R. E. at the Ordnance Map Office Southampton and Published by Lt Colonel Hall, R. E. Superintendent. 5th November 1851.

Figure 1.35



Farnley Park: detail from Ordnance Survey Lower Wharfedale and Washburn Valley, Harrogate and Ilkley Moor No. 297, 1:25 000 scale, 2013

Figure 1.36



J. M.W. Turner, *The East Gate and Lodges, Farnley*, c.1818, body-colour on grey paper, 300 x 414, Private Collection

Figure 1.37



J. M.W. Turner, *The West Gates, Farnley*, c.1818, body-colour on grey paper, 329 x 444, Private Collection

Figure 1.38



J. M. W. Turner, *The Carriage Drive, Farnley*, c.1818, body-colour on grey paper,
293 x 409, Private Collection

Figure 1.39



J. M. W. Turner, *View of Farnley Hall*, c.1818, body-colour and black chalk on grey paper,
311 x 394, Private Collection

Figure 1.40



J. M. W. Turner, *Farnley Hall, from the junction of the Wharfe and Washburn*, c.1818, watercolour, 306 x 437, Ashmolean, Oxford

Figure 1.41



J. M. W. Turner, *Lake Tiny, Farnley Park*, c.1818, body-colour, 280 x 381, Private Collection

Figure 1.42



J. M. W. Turner, *The Avenue, Farnley*, c.1818, black chalk, watercolour and body-colour on a grey ground, 311 x 419, Private Collection

Figure 1.43



J. M. W. Turner, *The Woodwalk, Farnley Hall*, c.1818, watercolour and body-colour on grey paper, 292 x 400, Private Collection

Figure 1.44



J. M. W. Turner, *Lake Plantation, Farnley*, c.1818, watercolour,
386 x 394, Private Collection

Figure 1.45



J. M. W. Turner, *The Pheasant's Nest, Farnley Park*, c.1818, black chalk, watercolour and
body-colour, 281 x 394, South Africa National Gallery, Cape Town

Figure 1.46



J. M. W. Turner, *Shooting Party on Hawksworth Moor*, c.1816, watercolour with scratching out, 280 x 397, Private Collection

Figure 1.47



J. M. W. Turner, *Grouse Shooting on Beamsley Beacon*, c.1816, watercolour on paper, 279 x 395, The Wallace Collection, London

Figure 1.48



F. H. Fawkes, *Mr Grimston*, c.1810-30, Caricature Collection, Farnley Hall

Figure 1.49



F. H. Fawkes, *Mr (?)*, c.1810-30, Caricature Collection, Farnley Hall

Figure 1.50



F. H. Fawkes, *Lord (?)*, c.1810-30, Caricature Collection, Farnley Hall

Figure 1.51



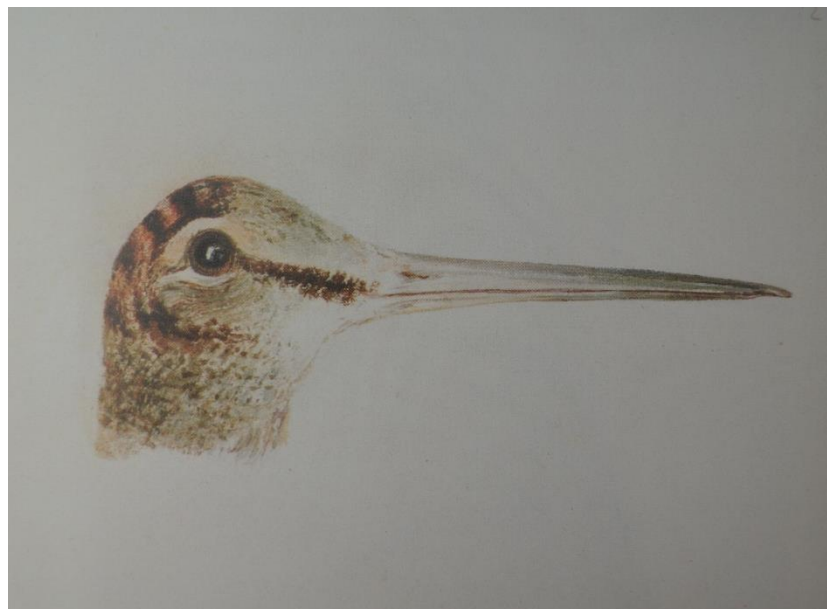
J. M. W. Turner, *Head of a Grouse*, c.1815-25, watercolour, 96 x 114,
Leeds City Art Gallery

Figure 1.52



J. M. W. Turner, *Head of a Partridge*, c.1815-25, watercolour, 102 x 95, Leeds City Art Gallery

Figure 1.53



J. M. W. Turner, *Head of a Woodcock*, c.1815-25, watercolour, 140 x 160, Leeds City Art Gallery

Figure 1.54



J. M. W. Turner, *Head of a Cock Pheasant*, c.1815-25, watercolour, 115 x 111, Leeds City Art Gallery

Figure 1.55



J. M. W. Turner, *The Deer Park, Caley Hall*, c.1818, watercolour, 280 x 381, Private Collection

Figure 1.56



J. M. W. Turner, *Valley of the Wharfe, from Caley Park*, c.1815, body-colour, 298 x 445, Private Collection

Figure 1.57



J. M. W. Turner, *Wharfedale from the Chevin*, c.1818, body-colour, 264 x 369, Rhode Island Museum of Art

Figure 1.58



J. M. W. Turner, *Farnley Hall from above Otley*, c.1815, watercolour, 280 x 398, Rijksmuseum, Amsterdam

Figure 1.59



J. M. W. Turner, *Caley Hall*, c.1818, body-colour on buff paper, 299 x 411, National Galleries of Scotland, Edinburgh

Figure 1.60



John R. Wildman, *J. M. W. Turner and Walter Fawkes at Farnley Hall after Coursing*, c.1820-4, oil on canvas, 686 x 889, Yale Center for British Art, Paul Mellon Collection

Figure 2.1



Abraham Cooper, *Untitled*, c.1819, oil on canvas, size unrecorded, Private Collection

Figure 2.2



William Marshall, *Thomas Fairfax, 3rd Lord Fairfax of Cameron*, 1647, published by John Partridge, after Edward Bower, line engraving, 293 x 230, National Portrait Gallery, London

Figure 2.3



J. M. W. Turner, *Oak Panelled Hall, with General Fairfax's Chair, Farnley*, c.1818, bodycolour on paper, 283 x 400, Private Collection

Figure 2.4



J. M. W. Turner, *A Frontispiece (at Farnley Hall)*, 1815, watercolour over graphite, with pen and ink and some scratching out on wove paper, 178 x 242, Ashmolean Museum, Oxford

Figure 2.5



Fairfax Hall, Menston, February 2020 (Author's photograph)

Figure 2.6



J. M. W. Turner, detail of Figure 2.1, *A Frontispiece (at Farnley Hall)*, 1815, watercolour over graphite, with pen and ink and some scratching out on wove paper, 178 x 242, Ashmolean Museum, Oxford

Figure 2.7



J. M. W. Turner, *Fairfaxiana, 1*, 'Fairfax's Armour', c.1815-1825, pencil and watercolour, 307 x 204, Private Collection

Figure 2.8



J. M. W. Turner, *Fairfaxiana, 2*, 'Fairfax's Drum', c.1815-1825, pencil and watercolour, 307 x 204, Private Collection

Figure 2.9



J. M. W. Turner, *Fairfaxiana*, 3, 'Fairfax's Chair', c.1815-25, pencil and watercolour, 307 x 204, Private Collection

Figure 2.10



J. M. W. Turner, *Fairfaxiana*, 4, 'The Three Swords', c.1815-1825, pencil and watercolour, 307 x 204, Private Collection

Figure 2.11



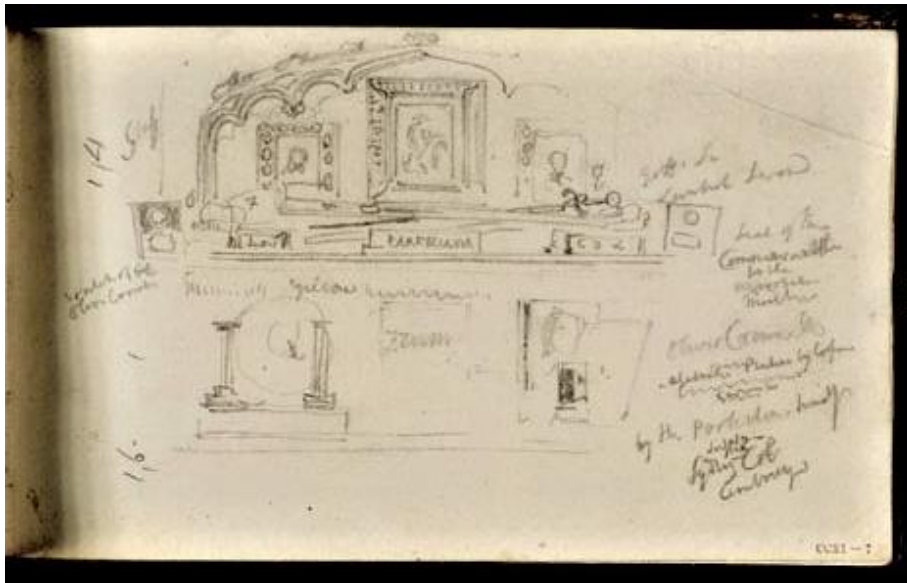
J. M. W. Turner, *Fairfaxiana*, 5, 'The Cabinet - closed', c.1815-1825, pencil and watercolour, 307 x 204, Private Collection

Figure 2.12



J. M. W. Turner, *Fairfaxiana*, 5, 'The Cabinet - open', c.1815-1825, pencil and watercolour, 307 x 204, Private Collection

Figure 2.13



J. M. W. Turner, *A Sideboard Containing Farnley Relics*, 1821, pencil on white wove paper, 113 x 189, Tate, London

Figure 2.14



J. M. W. Turner, *Historical Vignettes, I*, 'Coronation Thrones', c.1815-1825, pencil and watercolour, 307 x 204, Private Collection

Figure 2.15



J. M. W. Turner, *Historical Vignettes*, 2, 'Battle of Agincourt', c.1815-1825, pencil and watercolour, 307 x 204, Private Collection

Figure 2.16



J. M. W. Turner, *Historical Vignettes*, 3, 'Reformation', c.1815-1825, pencil and watercolour, 307 x 204, Private Collection

Figure 2.17



J. M. W. Turner, *Historical Vignettes*, 4, 'Carolus', c.1815-1825, pencil and watercolour, 307 x 204, Private Collection

Figure 2.18



J. M. W. Turner, *Historical Vignettes*, 5, 'First Period', c.1815-1825, pencil and watercolour, 307 x 204, Private Collection

Figure 2.19



J. M. W. Turner, *Historical Vignettes*, 6, 'Second Period', c.1815-1825, pencil and watercolour, 307 x 204, Private Collection

Figure 2.20



J. M. W. Turner, *Historical Vignettes*, 7, 'Third Period', c.1815-1825, pencil and watercolour, 307 x 204, Private Collection

Figure 2.21



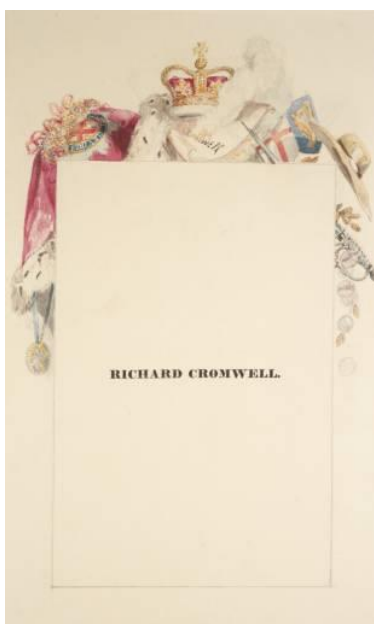
J. M. W. Turner, *Historical Vignettes*, 8, 'Fourth Period', c.1815-1825, pencil and watercolour, 307 x 204, Private Collection

Figure 2.22



J. M. W. Turner, *Historical Vignettes* 9, 'Oliver Cromwell', c.1815-1825, pencil and watercolour, 307 x 204, Private Collection

Figure 2.23



J. M. W. Turner, *Historical Vignettes 10*, 'Richard Cromwell', c.1815-1825, pencil and watercolour, 307 x 204, Private Collection

Figure 2.24



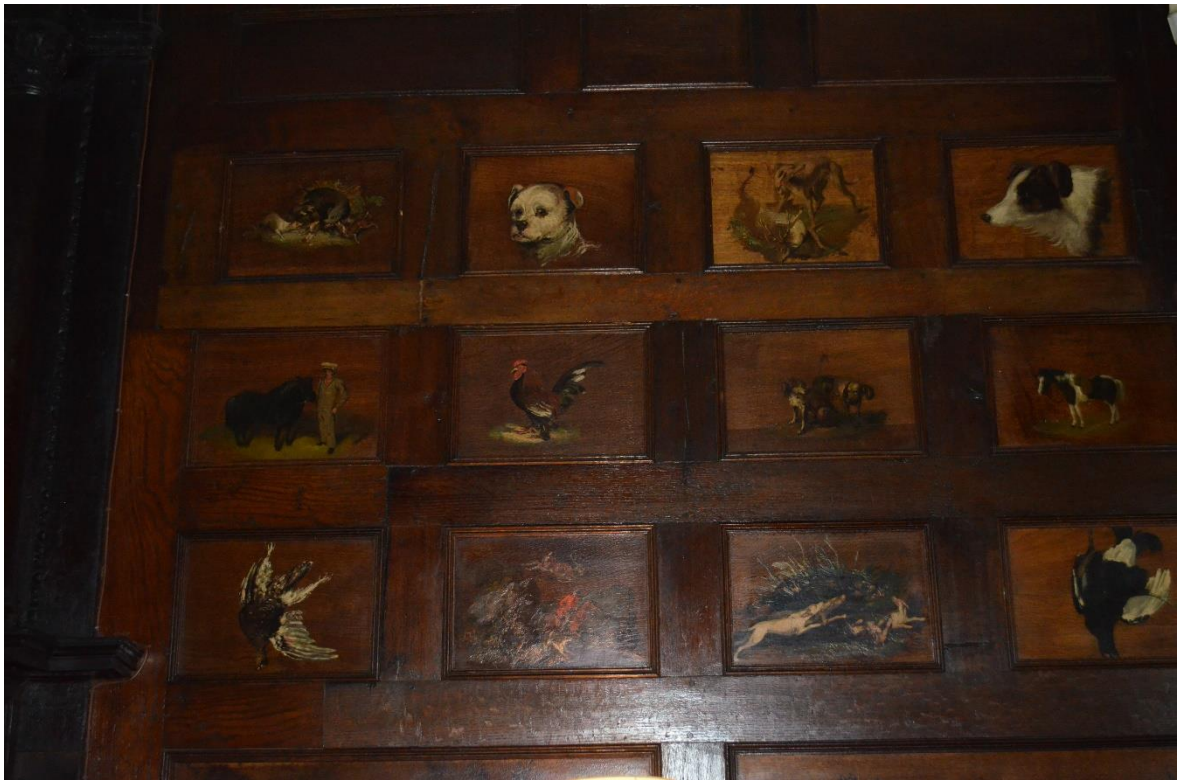
J. M. W. Turner, *Historical Vignettes 11*, 'Revolution 1688', c.1815-1825, pencil and watercolour, 307 x 204, Private Collection

Figure 2.25



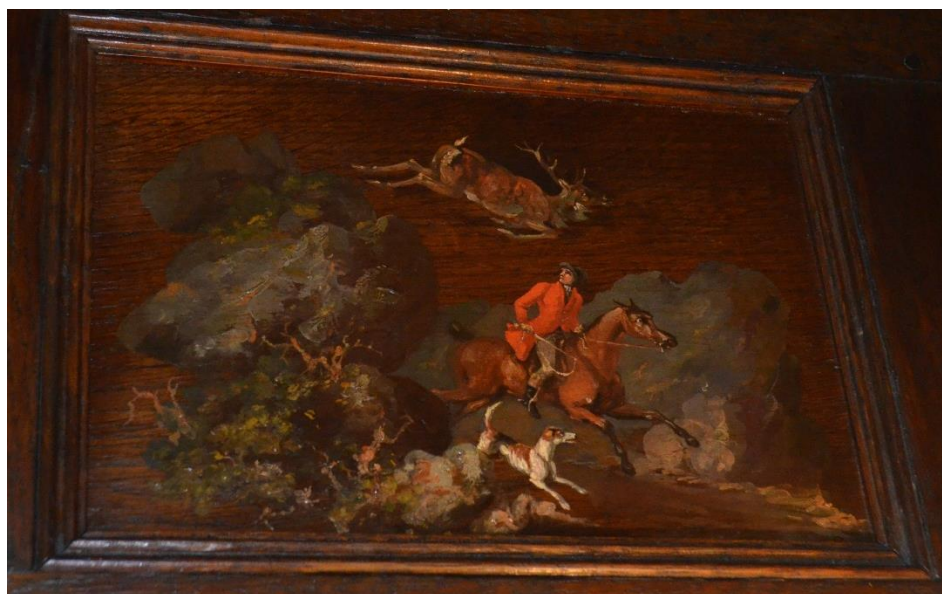
J. M. W. Turner, *Historical Vignettes 12*, 'The Banners', c.1815-1825, pencil and watercolour, 307 x 204, Private Collection

Figure 3.1



George Walker (?), Drawing room panel paintings, oil on oak panel, wall right of fireplace, Farnley Hall, June 2023 (Author's photograph)

Figure 3.2



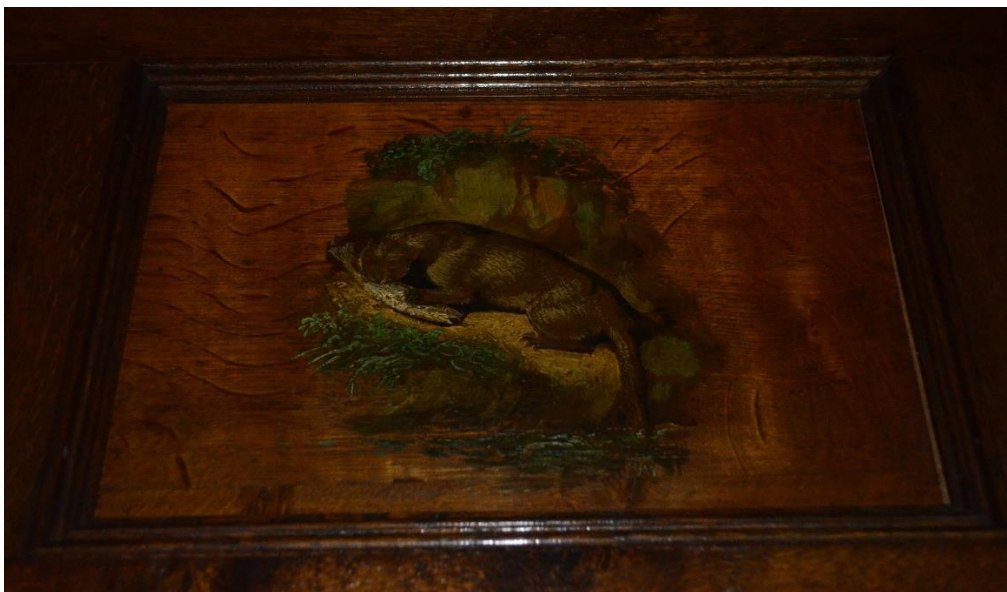
George Walker (?), 'Hunting Scene', oil on panel, Drawing Room, Farnley Hall, June 2023 (Author's photograph)

Figure 3.3



George Walker (?), 'Hunting Scene 2', oil on panel, Drawing Room, Farnley Hall, June 2023 (Author's photograph)

Figure 3.4



George Walker (?), 'Otter', oil on panel, Drawing Room, Farnley Hall, June 2023 (Author's photograph)

Figure 3.5



George Walker (?), 'Gathering', oil on panel, Drawing Room, Farnley Hall, June 2023
(Author's photograph)

Figure 3.6



George Walker (?), 'Beast', oil on panel, Drawing Room, Farnley Hall, June 2023
(Author's photograph)

Figure 3.7



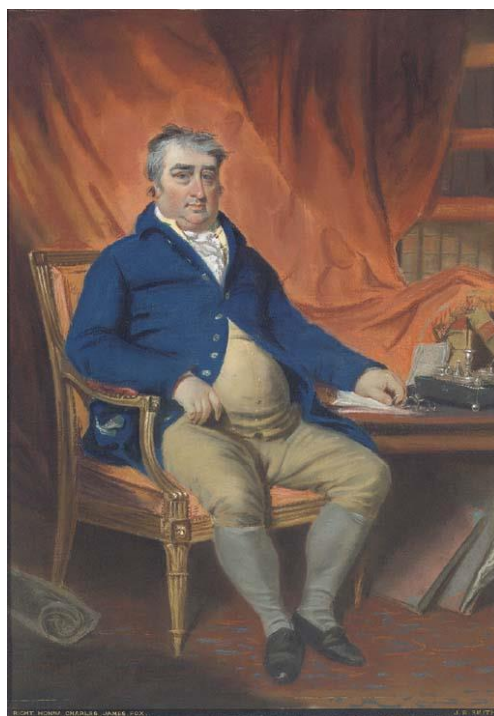
Unknown artist, *Walter Ramsden Beaumont Hawksworth Fawkes (d. 1792)*, oil on canvas, size unknown, Private Collection

Figure 3.8



John Hoppner, *Walter Ramsden Fawkes*, c. 1810, oil on canvas, size unknown, Private Collection

Figure 3.9



John Raphael Smith, *Right Honorable Charles James Fox, M.P. (1749-1806), seated in his study, in a blue coat and mustard waistcoat and breeches*, c.1800, pastel, 610 x 440, Private Collection.

Figure 3.10



Attributed to Thomas Charles Wageman (1787-1863), *Portrait of Walter Ramsden Fawkes (1769-1825)*, oil on canvas, 665 x 480, Private Collection

Figure 3.11



Thomas Woolnorth after Thomas Charles Wageman, *Walter Ramsden Fawkes*, published 1825, stipple engraving, 36 x 24, National Portrait Gallery, London

Figure 3.12



William Robinson (?), *Walter Ramsden Fawkes*, c.1823, oil on canvas,
Size unknown, Private Collection

Figure 3.13



George Romney, *Lady Hamilton as 'Nature'*, 1782, oil on canvas, 759 x 629, The Frick Collection, New York

Figure 3.14



J. M. W. Turner, *Memorial Window, Farnley*, c.1818, body-colour on grey paper, 290 x 318, Private Collection

Figure 3.15



J. M. W. Turner, *Morning Room, Farnley*, c.1818, body-colour on grey paper, 314 x 428 (sight), Private Collection

Figure 3.16



J. M. W. Turner, *Grand Staircase, Farnley*, c.1818, body-colour on grey paper, 326 x 422 (sight), Private Collection

Figure 3.17



J. M. W. Turner, *Library, Farnley*, c.1818, body-colour on grey paper, 323 x 429 (sight),
Private Collection

Figure 3.18



J. M. W. Turner, *Library, with Heraldic Window, Farnley*, c.1818, body-colour on grey
paper, 310 x 405 (sight), Private Collection

Figure 3.19



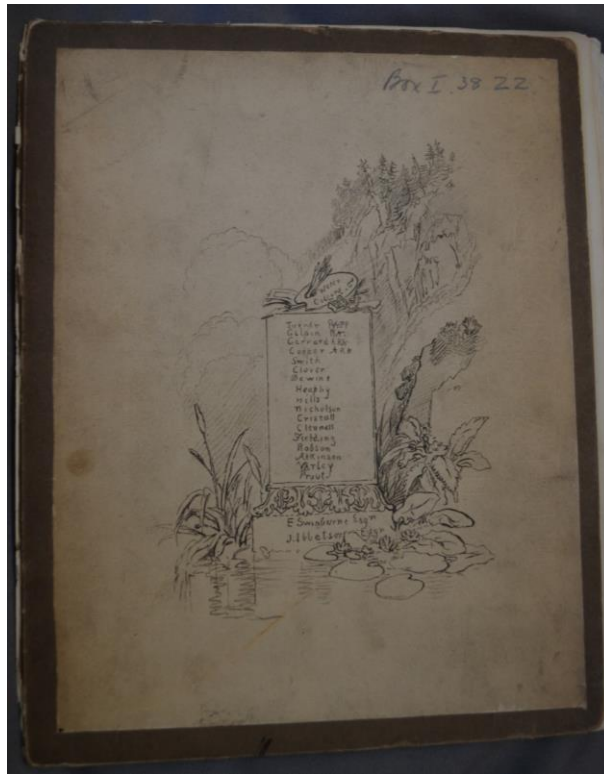
J. M. W. Turner, *Oak Staircase, Farnley*, c.1818, bodycolour on paper, 318 x 411, Private Collection

Figure 3.20



J. M. W. Turner, *Dort or Dordrecht: The Dort Packet-boat from Rotterdam becalmed*, 1818, oil on canvas, 1575 x 2337, Yale Center for British Art, Paul Mellon Collection

Figure 3.21



Frontispiece designed by J. M. W. Turner from the Souvenir Catalogue of Fawkes' 1819 Exhibition, *A Collection of Water Colour Drawings in the Possession of Walter Fawkes, Esq.*, printed by Benjamin Besley, 1819, National Art Library, Victoria and Albert Museum, London (Author's photograph)

Figure 3.22



Tureen, Nantgarw Porcelain, c.1818, Farnley Hall, June 2023 (Author's photograph)

Figure 3.23



Plates, Nantgarw Porcelain, c.1818, Farnley Hall, June 2023 (Author's photograph)

Figure 4.1



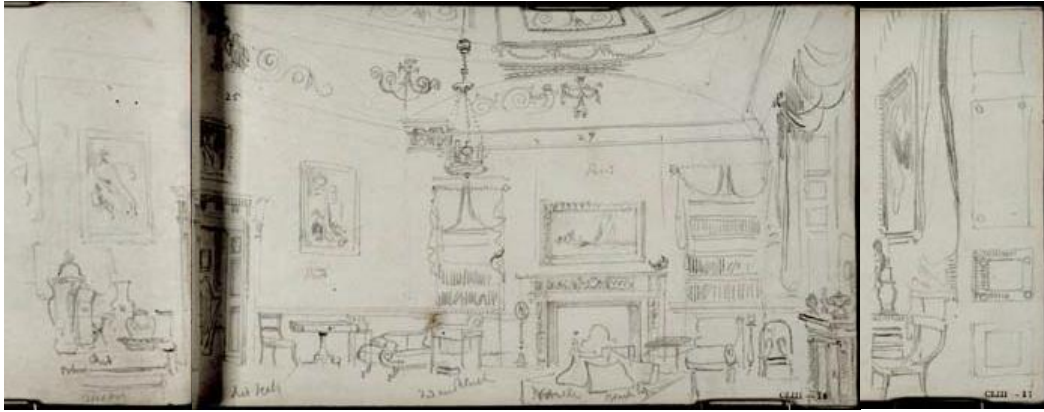
Bookcases, Georgian Library, Farnley Hall, July 2021 (Author's photograph)

Figure 4.2



Bookcase with jib door, Georgian Library, Farnley Hall, July 2021 (Author's photograph)

Figure 4.3



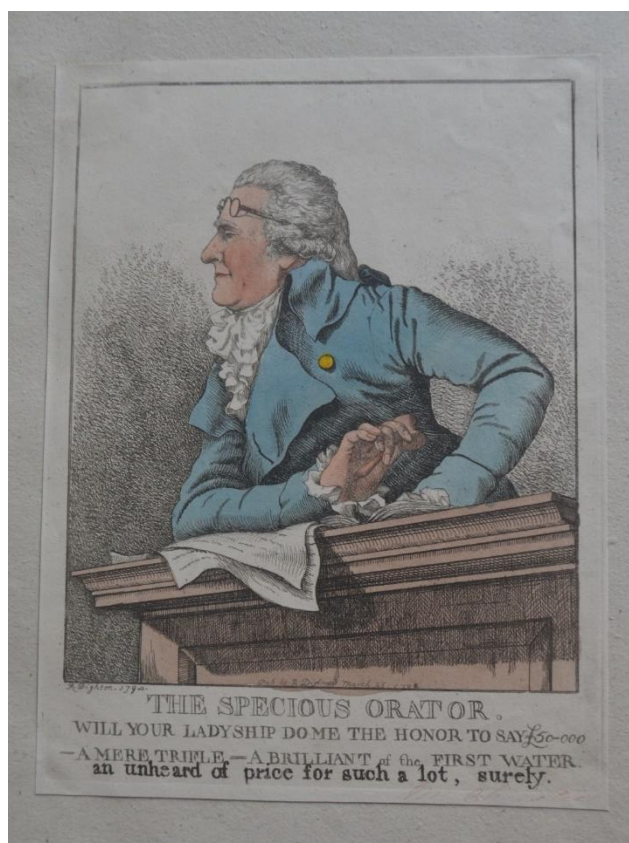
J. M. W. Turner, *Interior of the Library, Farnley Hall*, 1818, pencil on white wove paper, Farnley Sketchbook, D12021, 22 & 23, Tate, London

Figure 4.4



W. Wilkins Pinoil(?), *E.YAW.OR*, 1816, print on paper, Private Collection

Figure 4.5



R Dighton, *The Specious Orator*, 1794, print on paper, Private Collection

Figure 4.6



James Gillray, *The Eruption of the Mountain*, 1794, print on paper, Private Collection

Figure 4.7



James Gillray, *Democratic Leveling*, 1796, print on paper, Private Collection

Figure 4.8



James Gillray, *The Generae of Patriotism, or the Bloomsbury farmer, planting Bedfordshire wheat*, 1796, print on paper, Private Collection

Figure 4.9



Samuel W Fores, *The Cheltenham Dandy or Gloucestershire Macke.roni*, 1819, print on paper, Private Collection

Figure 4.10



R Dighton, *A View from Trinity College, Oxford*, 1807, print on paper, Private Collection

Figure 4.11



R. Dighton, *A Celebrated Public Orator*, 1808, print on paper, Private Collection

Figure 4.12



George Cruickshank, *Radical Parliament!!*, 1821, print on paper, Private Collection

Figure 4.13



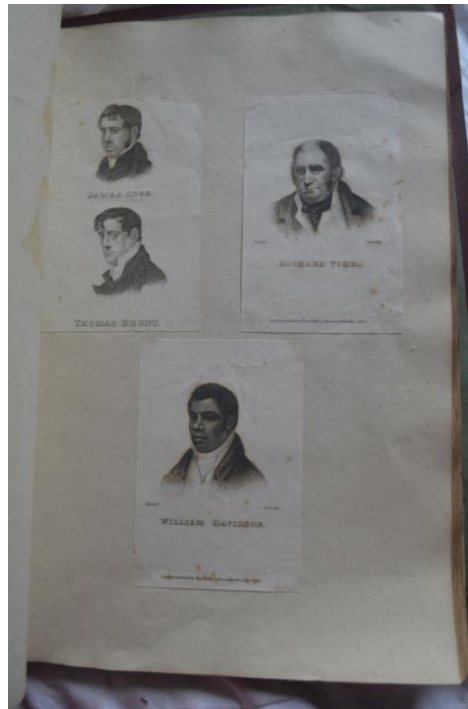
Unattributed, *Le Moine Mennechini Chef des constitutionnels de Naples*, undated, print on paper, Private Collection

Figure 4.14



Print of John Bellingham from an engraved sketch by I Jackson, 1812, engraved by 'Scriven', Private Collection

Figure 4.15



Prints of James Ing and Thomas Brunt, unattributed, prints of Richard Tidd and William Davidson sketched by Wivell, engraved by Cooper and published by Thomas Kelly. All undated, print on paper, Private Collection

Figure 4.16



Images in Walter Fawkes', *Portraits of Kings etc*, c.1820, Private Collection

Figure 4.17



‘William Rufus King of England’

in Walter Fawkes’, *Portraits of Kings etc*, c.1820, Private Collection

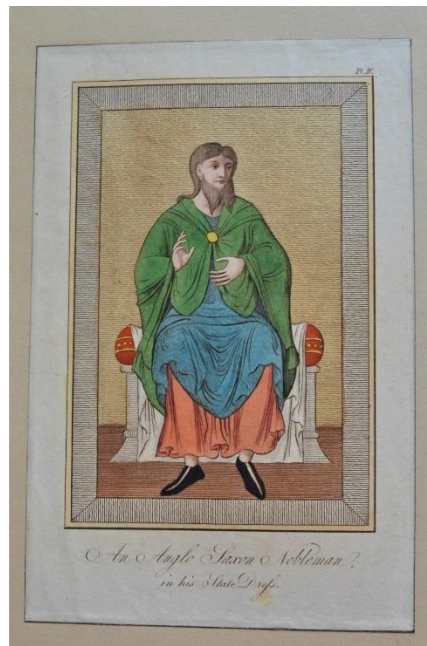
Figure 4.18



‘The Summer Dress and Travelling Habit of the Ladies of the Eighth Century’

in Walter Fawkes’, *Portraits of Kings etc*, c.1820, Private Collection

Figure 4.19



‘An Anglo Saxon Nobleman in his State Dress’
in Walter Fawkes’, *Portraits of Kings etc*, c.1820, Private Collection

Figure 4.20



J. M. W. Turner, *Leeds*, 1816, watercolour, 292 x 432,
Yale Center for British Art, Paul Mellon Collection

Figure 4.21



George Walker, 'Milk Boy', Plate XVI, in *The Costumes of Yorkshire*, 1814

Figure 4.22



George Walker, 'Stone-breakers on the Road', Plate VII,
The Costumes of Yorkshire, 1814

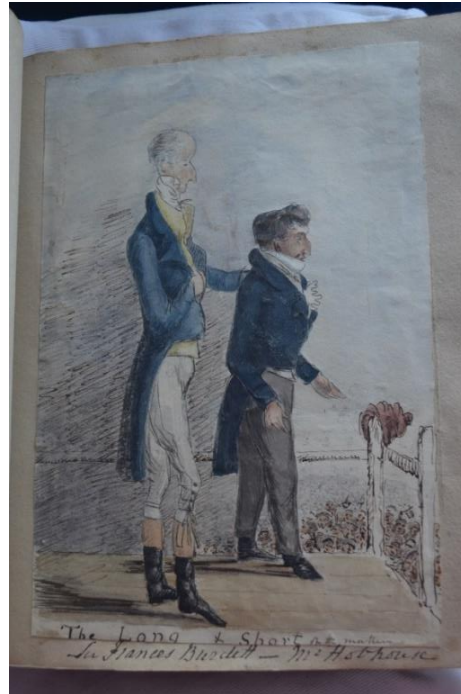
Figures 4.23-4.29 are from a selection by Francis Hawksworth Fawkes, dated c.1830 and bound together in a volume at Farnley Hall (Author's photographs):

Figure 4.23



Mr Waterton

Figure 4.24



*Sir Frances Burdett and Mr Hobhouse
The long and short on the*

Figure 4.25



Mr William Morrill

Figure 4.26



Sir Charles Henry Ibbetson

Figure 4.27



Lord Harewood and Colonel Lascelles

Figure 4.28



Hon^{bl} Henry Lascelles

Figure 4.29



Francis Hawksworth Fawkes, *Caricature of J. M. W. Turner, R. A. P. P.*, c.1818, grey ink wash over pencil on cream paper, 317 x 260, Indianapolis Museum of Art

Figure 4.30



S. Howitt, 'Sparrowhawk', c.1815-20, watercolour,
150 x 107, *Ornithological Collection*, Private Collection

Figure 4.31



E Swinburne, 'Blackcock', c.1815-20, watercolour,
234 x 243, *Ornithological Collection*, Private Collection

Figure 4.32



Taylor, 'Head of a Red-backed Shrike (F)', c.1815-20, watercolour,
85 x 105, *Ornithological Collection*, Private Collection

Figure 4.33



Lady Armytage, 'Head of a Shoveller', c.1815-20, watercolour,
181 x 198, *Ornithological Collection*, Private Collection

Figure 4.34



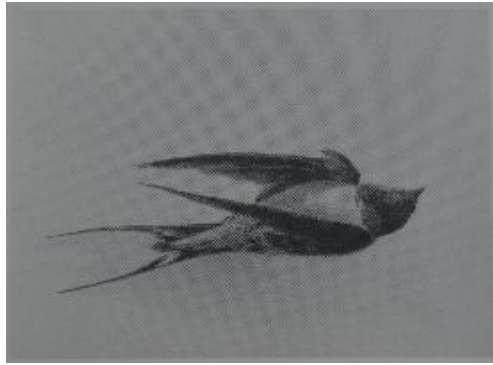
Miss I Middleton, 'Head of a Mallord', c.1815-20, watercolour,
110 x 132, *Ornithological Collection*, Private Collection

Figure 4.35



John Ibbetson, 'Dead Treecreeper', c.1815-20, watercolour,
119 x 176, *Ornithological Collection*, Private Collection

Figure 4.36



Sir William Pilkington, 'Dead Swallow (F)', c.1815-20, watercolour,
165 x 229, *Ornithological Collection*, Private Collection

Figure 4.37



J. M. W. Turner, *Dead Kingfisher*, c.1815-20, watercolour,
178 x 164, Leeds Art Gallery

Figure 4.38



Taylor, 'Dead Water Ouzel', c.1815-20, watercolour,
182 x 152, *Ornithological Collection*, Private Collection

Figure 4.39



J. M. W. Turner, *Dead Grouse*, c.1815-20, watercolour,
262 x 207, Leeds Art Gallery

Figure 4.40



Jan Weenix, *Dead Game and Small Birds*, c.1695, oil on canvas, 1340 x 1700,
Wallace Collection, London

Figure 4.41



J. M. W. Turner, *Head of White Owl*, c.1815-20, watercolour over pencil,
261 x 195, Leeds Art Gallery

Figure 4.42



J. M. W. Turner, *Head of Heron*, c.1815-20, watercolour over pencil with scratching out, 250 x 292, Leeds Art Gallery

Figure 4.43



J. M. W Turner, *Raby Castle, the Seat of the Earl of Darlington*, 1817, oil on canvas, 1190 x 1806, The Walters Art Museum, Baltimore

Figure 4.44



J. M. W. Turner, *The Acropolis, Athens*, c.1822, watercolour,
187 x 137, Museum of the City of Athens Vouros-Eutaxias

Figure 4.45



J. M. W. Turner, *Lalla Rookh*, c.1822, watercolour,
184 x 133, Untraced

Figure 4.46



J. M. W. Turner, *Norham Castle*, c.1822, watercolour,
190 x 143, Private Collection

Figure 4.47



J. M. W. Turner, *Rokeby*, c.1822, watercolour,
202 x 142, The Higgins, Bedford

Figure 4.48



J. M. W. Turner, *Melrose Abbey*, c.1822, watercolour,
184 x 133, Clark Art Institute, Massachusetts

Figure 4.49



J. M. W. Turner, *Glen Artney*, c.1822, watercolour,
203 x 146, Private Collection

Figure 4.50



J. M. W. Turner, *Three Kingdoms Frontispiece*, c.1822, pencil and watercolour,
198 x 140, Private Collection

Figure 5.1



J. M. W. Turner, *Bolton Abbey, Yorkshire*, 1809, watercolour with scratching out,
278 x 395, British Museum, London

Figure 5.2



J. M. W. Turner, *The Strid, Bolton Woods*, 1808, pencil on paper,
449 x 587, Tate, London

Figure 5.3



J. M. W. Turner, *The Strid, Bolton Abbey, Yorkshire*, c.1809, watercolour,
280 x 381, Untraced

Figure 5.4



J. M. W. Turner, *Farnley Hall and Otley from the West Chevin*, c.1816-7, pencil on paper, 129 x 205, Tate Gallery, London

Figure 5.5



J. M. W. Turner, *Farnley Hall and Otley from The West Chevin*, c.1816, pencil on paper, 285 x 460, Tate Gallery, London

Figure 5.6



J. M. W. Turner, *Farnley Hall from Otley Chevin*, c.1816-18, watercolour, 303 x 408, Tate Gallery, London

Figure 5.7



J. M. W. Turner, *Farnley Hall, from above Otley*, c.1816, watercolour, 280 x 398, Rijksmuseum, Amsterdam

Figure 5.8



J. M. W. Turner, *The Valley of Chamouni*, 1809, watercolour, 280 x 395, Whitworth, Manchester

Figure 5.9



J. M. W. Turner, *Tabley, Cheshire, the Seat of Sir J. F. Leicester, Bart.: Calm Morning*, 1809, oil on canvas, 910 x 1215, Tate Gallery and the National Trust, Petworth House

Figure 5.10



J. M. W. Turner, *Tabley, Cheshire, the Seat of Sir J. F. Leicester, Bart.: Windy Day*, 1808, oil on canvas, 915 x 1206, University of Manchester

Figure 5.11



F. H. Fawkes, *Playing Cards at Farnley Hall*, c.1810-1830, Caricature Collection, Farnley Hall

Figure 5.12



Claude Gellée, called Le Lorrain, *Landscape with Jacob and Laban and his Daughters*, c.1654, oil on canvas, 1435 x 2520, The National Trust

Figure 5.13



J. M. W. Turner, *Petworth, Sussex, the Seat of the Earl of Egremont: Dewy Morning*, 1810, oil on canvas, 914 x 1206, Tate Gallery and the National Trust, Petworth House

Figure 5.14



J. M. W. Turner, *Cockermouth Castle*, 1810, oil on canvas, 603 x 902, Tate Gallery and the National Trust, Petworth House

Figure 5.15



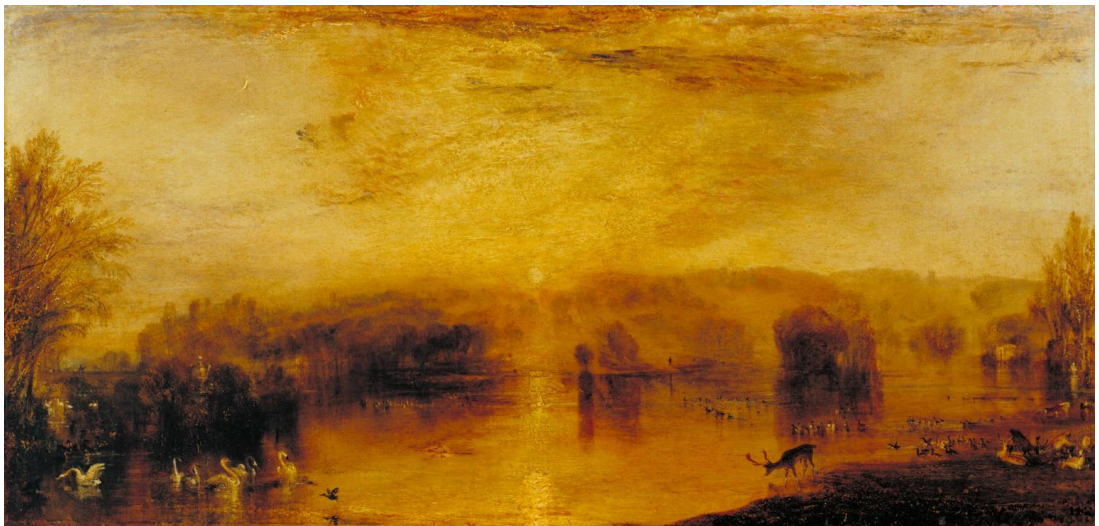
Carved Room, Petworth House, September 2021 (Author's photograph)

Figure 5.16



J. M. W. Turner, *The Lake, Petworth: Sunset, Fighting Bucks*, c.1829, oil on canvas, 622 x 1460, Tate Gallery and the National Trust, Petworth House

Figure 5.17



J. M. W. Turner, *The Lake, Petworth: Sunset, a Stag Drinking*, c.1829, oil on canvas, 635 x 1320, Tate Gallery and the National Trust, Petworth House

Figure 5.18



J. M. W. Turner, *Chichester Canal*, c.1829, oil on canvas, 635 x 1321,
Tate Gallery and the National Trust, Petworth House

Figure 5.19



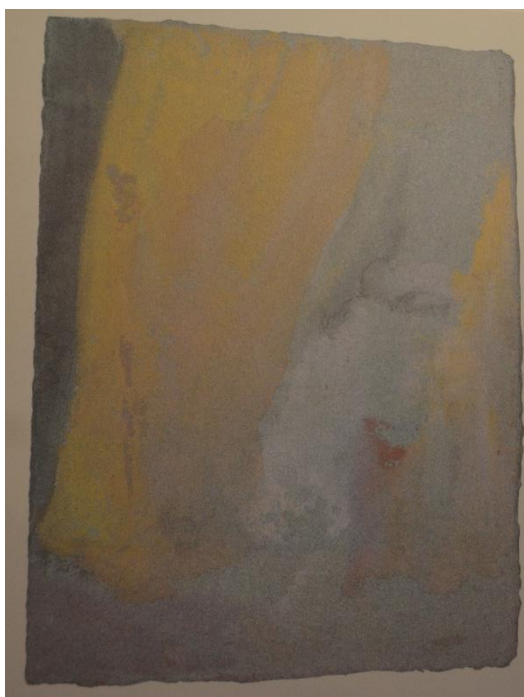
J. M. W. Turner, *Brighton from the Sea*, c.1829, oil on canvas,
635 x 1321, Tate Gallery and the National Trust, Petworth House

Figure 5.20



J. M. W. Turner, *Interior of a Gothic Church*, c.1797, oil on mahogany, 280 x 405,
Tate Gallery, London

Figure 5.21



J. M. W. Turner, *Yellow Curtains*, 1827, gouache and watercolour,
143 x 192, Tate Gallery, London

Figure 5.22



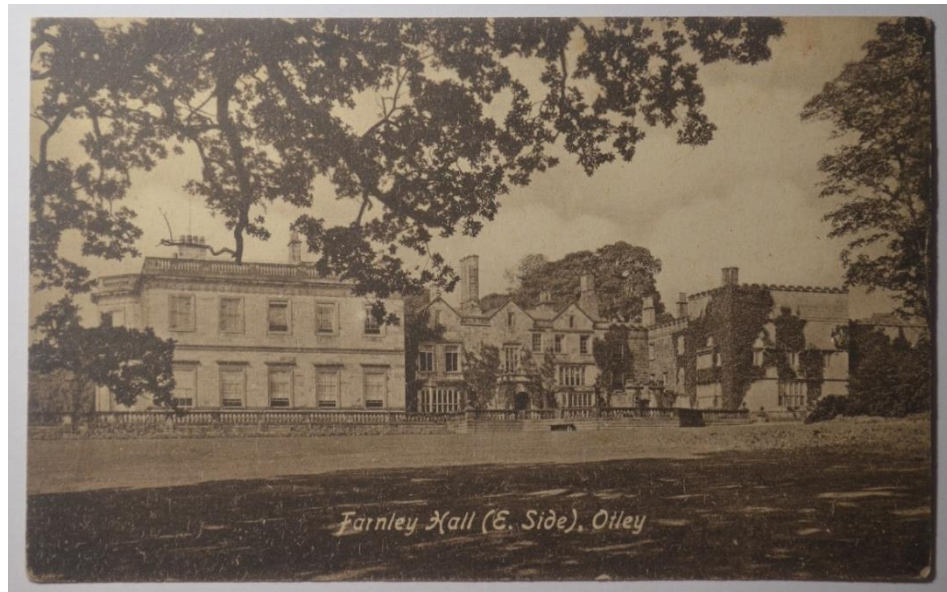
J. M. W. Turner, *The South Wall of the Square Dining-Room*, 1827, gouache on paper, 138 x 188, Tate Gallery, London

Figure 5.23



J. M. W. Turner, *Music in the White Library*, 1827, gouache and watercolour on paper, 140 x 190, Tate Gallery, London

Figure 6.1



Postcard of Farnley Hall showing to the right the wing added in the late nineteenth century, and removed in the twentieth century. Private Collection

Figure 6.2



Press cutting from 1940, Private Collection